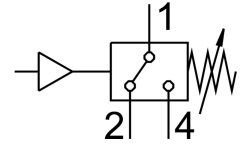
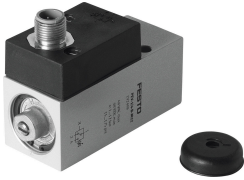


Pressure switch PEV-1/4-B-M12

Part number: 192488

FESTO



Data sheet

| Feature | Value |
|--|--|
| Conforms to standard | EN 60947-5-1 |
| Approval | CCC c UL us - Recognized (OL) |
| CE mark (see declaration of conformity) | To EU Low Voltage Directive |
| CE marking (see declaration of conformity) | To UK regulations for electrical equipment |
| Explosion protection | The information in the certificate must be observed! Zone 1 (ATEX) Zone 2 (ATEX) Zone 21 (ATEX) Zone 22 (ATEX) |
| Note on materials | RoHS-compliant |
| Measured variable | Relative pressure |
| Measurement method | Pneumatic/electric pressure transducer |
| Operating pressure | 0.1 MPa...1.2 MPa 1 bar...12 bar |
| Operating medium | Compressed air to ISO 8573-1:2010 [7:-:-] Water |
| Note on operating and pilot medium | Lubricated operation possible (in which case lubricated operation will always be required) |
| Media temperature | -20 °C...80 °C |
| Ambient temperature | -20 °C...80 °C |
| Switching element function | Changeover switch |
| Max. switching frequency | 3 Hz |
| Max. switching output voltage AC | 48 V |
| Max. switching output voltage DC | 48 V |
| Max. output current | 4000 mA |
| Min. load current | 1 mA at 24 V 10 mA at 10 V 100 mA at 5 V |
| Utilisation category - inductive load | AC-14 DC-13 |
| Utilisation category - resistive load | AC-12 DC-12 |

| Feature | Value |
|--------------------------------|--|
| Electrical connection | 4-pin M12x1 Plugs To EN 60947-5-2 Round design |
| Type of mounting | With through-hole |
| Mounting position | optional |
| Pneumatic connection | G1/4 |
| Product weight | 194 g |
| Material housing | Die-cast aluminium |
| Material switch contact | Silver |
| Setting range threshold value | 1 bar...12 bar |
| Degree of protection | IP65 |
| Corrosion resistance class CRC | 2 - Moderate corrosion stress |
| LABS (PWIS) conformity | VDMA24364-B1/B2-L |