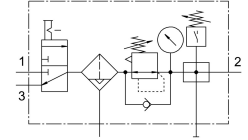
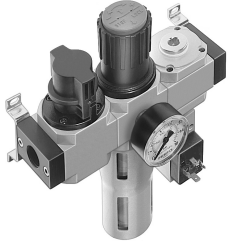


# Service unit combination LFR-3/4-D-DI-MAXI-KF-A

Part number: 192466

FESTO



## Data sheet

Feature	Value
Size	Maxi
Series	D
Actuator lock	Rotary knob with detent
Mounting position	Vertical +/-5°
Grade of filtration	40 µm
Condensate drain	Fully automatic
Design	Branching module Pressure switch On/off valve Filter regulator with pressure gauge
Max. condensate volume	43 cm <sup>3</sup>
Bowl guard	Metal bowl guard
Pressure gauge (ANALOG) or Pressure display (DIGITAL)	With pressure gauge
Operating pressure	2 bar...12 bar
Pressure regulation range	0.5 bar...12 bar
Standard nominal flow rate	6000 l/min
Operating medium	Compressed air to ISO 8573-1:2010 [:-:-] Inert gases
Corrosion resistance class CRC	2 - Moderate corrosion stress
LABS (PWIS) conformity	VDMA24364-B1/B2-L
Air purity class at output	Compressed air to ISO 8573-1:2010 [6:8:4] Inert gases
Media temperature	-10 °C...60 °C
Ambient temperature	-10 °C...60 °C
Product weight	3500 g
Type of mounting	Either: In-line installation With accessories
Pneumatic connection, port 1	G3/4
Pneumatic connection, port 2	G3/4
Material housing	Die-cast zinc
Material bowl	PC