

filter regulator

LFR-1/2-D-DI-MAXI-A

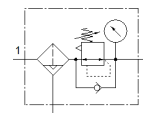
Part number: 192386

Classic - do not use for new projects

FESTO

Output pressure max. 12 bar, with metal bowl guard and pressure gauge.
With automatic condensate drain. With directly-controlled pressure regulator.

Modern alternatives can be found by entering the first four characters of the type code in the search field.



Data sheet

Feature	Value
Size	Maxi
Series	D
Actuator lock	Rotary knob with lock
Assembly position	Vertical +/- 5°
Grade of filtration	40 µm
Condensate drain	fully automatic
Design structure	Filter regulator with pressure gauge
Max. condensate volume	43 cm ³
Bowl guard	Metal bowl guard
Pressure gauge	with pressure gauge
Operating pressure	2 ... 12 bar
Pressure regulation range	0.5 ... 12 bar
Max. pressure hysteresis	0.4 bar
Standard nominal flow rate	4,500 l/min
Operating medium	Compressed air to ISO 8573-1:2010 [7:9:-] Inert gases
Corrosion resistance classification CRC	2 - Moderate corrosion stress
PWIS conformity	VDMA24364-B1/B2-L
Storage temperature	-10 ... 60 °C
Air purity class at output	Compressed air in accordance with ISO8573-1:2010 [7:8:4] Inert gases
Medium temperature	5 ... 60 °C
Ambient temperature	5 ... 60 °C
Product weight	1,670 g
Mounting type	Line installation
Pneumatic connection, port 1	G1/2
Pneumatic connection, port 2	G1/2
Materials note	Conforms to RoHS
Material housing	Zinc die-casting
Material bowl	PC