

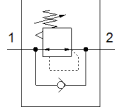
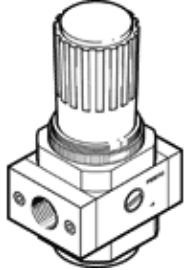
# pressure regulator

## LR-1/4-D-7-O-I-MINI

Part number: 192307  
Classic - do not use for new projects

FESTO

With increased return exhaust, working pressure up to 7 bar.  
Modern alternatives can be found by entering the first four characters of the type code in the search field.



## Data sheet

Feature	Value
Size	Mini
Series	D
Actuator lock	Rotary knob with lock
Assembly position	Any
Design structure	directly-controlled diaphragm regulator
Controller function	Output pressure constant with initial pressure compensation with secondary exhaust with return flow
Pressure gauge	Prepared for G1/8
Operating pressure	1 ... 16 bar
Pressure regulation range	0.5 ... 7 bar
Max. pressure hysteresis	0.2 bar
Standard nominal flow rate	1,600 l/min
Operating medium	Compressed air in accordance with ISO8573-1:2010 [7:4:4] Inert gases
Note on operating and pilot medium	Lubricated operation possible (subsequently required for further operation)
PWIS conformity	VDMA24364-B1/B2-L
Air purity class at output	Compressed air in accordance with ISO8573-1:2010 [7:4:4] Inert gases
Medium temperature	-10 ... 60 °C
Ambient temperature	-10 ... 60 °C
Product weight	300 g
Mounting type	Front panel installation Line installation with accessories
Pneumatic connection, port 1	G1/4
Pneumatic connection, port 2	G1/4
Materials note	Conforms to RoHS
Material of connecting plate	Zinc die-casting
Material seals	NBR
Material housing	Zinc die-casting