

Solenoid valve

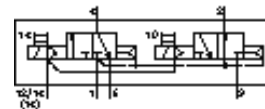
MN2H-2X30-G-D-02-S-230VAC

Part number: 191393

FESTO

In accordance with ISO 15407/-1, with solenoid coil and manual override, without plug socket.

Products to be discontinued. Available until 2009.



Data sheet

| Feature | Value |
|---|--|
| Valve function | 2x3/2 open, single solenoid |
| Type of actuation | electrical |
| Width | 18 mm |
| Standard nominal flow rate | 490 l/min |
| Operating pressure | 2 ... 10 bar |
| Design structure | Piston slide |
| Type of reset | Air spring |
| Protection class | IP65 |
| Nominal size | 6 mm |
| Grid dimension | 19 mm |
| Exhaust-air function | throttleable |
| Sealing principle | soft |
| Assembly position | Any |
| Conforms to standard | VDMA 24563 |
| Manual override | with accessories, detenting |
| Type of piloting | Piloted |
| Pilot air supply | external |
| Flow direction | non reversible |
| Pilot pressure | 1.3 ... 10 bar |
| b value | 0.25 |
| C value | 2.15 l/sbar |
| Switching time off | 16 ms |
| Switching time on | 15 ms |
| Characteristic coil data | 230V AC: 50Hz 230V AC: 60Hz |
| Operating medium | filtered compressed air, grade of filtration 40 µm, lubricated or unlubricated Vacuum |
| CE mark (see declaration of conformity) | to EU directive low-voltage devices |
| Corrosion resistance classification CRC | 2 |
| Medium temperature | -10 ... 50 °C |
| Pilot medium | filtered compressed air, grade of filtration 40 µm, lubricated or unlubricated |
| Ambient temperature | -10 ... 50 °C |
| Product weight | 210 g |
| Electrical connection | Plug to DIN 43650 Design C |
| Mounting type | with through hole |
| Auxiliary pilot air port 12/14 | Sub-base VDMA 24563 size 2 |
| Pilot exhaust port 82/84 | Sub-base VDMA 24563 size 2 |
| Pneumatic connection, port 1 | Sub-base VDMA 24563 size 2 |

| Feature | Value |
|---------------------------------|----------------------------|
| Pneumatic connection, port 2 | Sub-base VDMA 24563 size 2 |
| Pneumatic connection, port 3 | Sub-base VDMA 24563 size 2 |
| Pneumatic connection, port 4 | Sub-base VDMA 24563 size 2 |
| Pneumatic connection, port 5 | Sub-base VDMA 24563 size 2 |
| Materials information for seals | NBR |
| Materials information, housing | Aluminium die cast |