

Solenoid valve

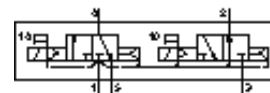
MN2H-2X30-G-D-01-230VAC

Part number: 191362

FESTO

In accordance with ISO 15407/-1, with solenoid coil and manual override, without plug socket.

Products to be discontinued. Available until 2009.



Data sheet

Feature	Value
Valve function	2x3/2 open, single solenoid
Type of actuation	electrical
Width	26 mm
Standard nominal flow rate	900 l/min
Operating pressure	2 ... 10 bar
Design structure	Piston slide
Type of reset	Air spring
Protection class	IP65
Nominal size	8 mm
Grid dimension	27 mm
Exhaust-air function	throttleable
Sealing principle	soft
Assembly position	Any
Conforms to standard	ISO 15407-1 VDMA 24563
Manual override	with accessories, detenting
Type of piloting	Piloted
Pilot air supply	Internal
Flow direction	non reversible
b value	0.27
C value	3.8 l/sbar
Switching time off	29 ms
Switching time on	18 ms
Characteristic coil data	230V AC: 50Hz 230V AC: 60Hz
Operating medium	filtered compressed air, grade of filtration 40 µm, lubricated or unlubricated
CE mark (see declaration of conformity)	to EU directive low-voltage devices
Corrosion resistance classification CRC	2
Medium temperature	-10 ... 50 °C
Ambient temperature	-10 ... 50 °C
Product weight	320 g
Electrical connection	Plug to DIN 43650 Design C
Mounting type	with through hole
Pilot exhaust port 82/84	Connection plate size 26 mm, according to ISO 15407-1 Sub-base VDMA 24563 size 1
Pneumatic connection, port 1	Connection plate size 26 mm, according to ISO 15407-1 Sub-base VDMA 24563 size 1
Pneumatic connection, port 2	Connection plate size 26 mm, according to ISO 15407-1 Sub-base VDMA 24563 size 1

Feature	Value
Pneumatic connection, port 3	Connection plate size 26 mm, according to ISO 15407-1 Sub-base VDMA 24563 size 1
Pneumatic connection, port 4	Connection plate size 26 mm, according to ISO 15407-1 Sub-base VDMA 24563 size 1
Pneumatic connection, port 5	Connection plate size 26 mm, according to ISO 15407-1 Sub-base VDMA 24563 size 1
Materials information for seals	NBR
Materials information, housing	Aluminium die cast