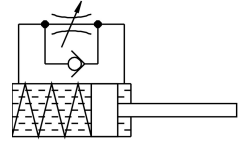


Shock absorber YSRW-10-17

Part number: 191195

FESTO



Data sheet

Feature	Value
Size	10
Stroke	17 mm
Cushioning	Self-adjusting Soft characteristic curve
Mounting position	optional
Position detection	Without
Max. impact speed	3 m/s
Reset time at room temperature	0.2 s
Reset time at min. ambient temperature	1 s
Mode of operation	Single-acting Pushing
Corrosion resistance class CRC	2 - Moderate corrosion stress
LABS (PWIS) conformity	VDMA24364-B2-L
Ambient temperature	-10 °C...80 °C
Cushioning length	17 mm
Max. stop force	700 N
Max. energy consumption per stroke	8 J
Max. energy consumption per hour	30000 J
Max. residual energy	0.03 J
Reset force	3.5 N
Min. insertion force	25 N
Product weight	54 g
Load range	20 kg
Type of mounting	Via lock nut
Note on materials	RoHS-compliant
Material seals	NBR
Material housing	Galvanised steel
Material piston rod	High-alloy steel