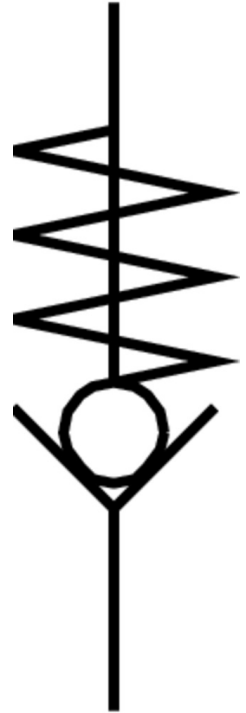


# Check valve H-QS-5/16-U

Part number: 190844

FESTO



## Data sheet

Feature	Value
Valve function	Non-return function
Pneumatic connection, port 1	QS-5/16
Pneumatic connection, port 2	QS-5/16
Type of mounting	In-line installation
Standard nominal flow rate	754 l/min
Operating pressure	-1 bar...10 bar
Ambient temperature	0 °C...60 °C
Material housing	Aluminium
Operating medium	Compressed air to ISO 8573-1:2010 [7:-:-]
Min. diff. pressure, opening	0.1 bar
Min. diff. pressure, closing	0.2 bar
Note on operating and pilot medium	Lubricated operation possible (in which case lubricated operation will always be required)
LABS (PWIS) conformity	VDMA24364-B1/B2-L
Product weight	21 g
Note on materials	RoHS-compliant