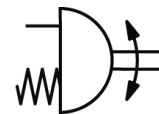
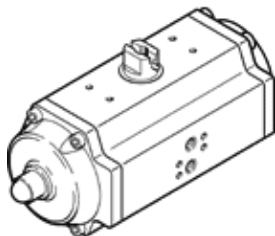


# Semi-rotary drive DRE-150-F14-Q06-FS

Part number: 190338

FESTO

Single-acting, air connection as per VDI/VDE 3845, Namur valves can be directly flange-mounted



## Data sheet

Feature	Value
Size of actuator	150
Flange hole pattern	F14
Swivel angle	90 deg
Fitting connection conforms to standard	ISO 5211
Cushioning	No cushioning
Assembly position	Any
Mode of operation	single-acting
Design structure	Rack and pinion
Position detection	No
Closing direction	Spring force, closing
Valve connection conforms to standard	VDI/VDE 3845 (NAMUR)
Operating pressure	2 ... 10 bar
ATEX category Gas	II 2G
Explosion ignition protection type Gas	c T6
ATEX category Dust	II 2D
Explosion ignition protection type Dust	c 60°C
Explosion-proof ambient temperature	-20°C ≤ Ta ≤ +60°C
Operating medium	Compressed air in accordance with ISO8573-1:2010 [7:4:4]
Note on operating and pilot medium	Lubricated operation possible (subsequently required for further operation)
CE mark (see declaration of conformity)	to EU directive explosion protection (ATEX)
Corrosion resistance classification CRC	3
Ambient temperature	-20 ... 80 °C
Air consumption at 6 bar per cycle 0°-90°-0°	37.2 l
Product weight	47,400 g
Shaft connection	V36
Pneumatic connection	Sub-base G1/4
Materials note	Contains PWIS substances