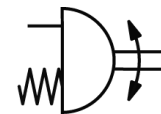
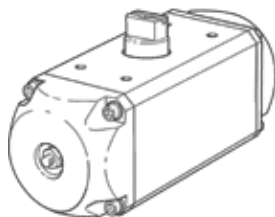


# Semi-rotary drive DRE-2-F03-Q10-FS

Part number: 189900

FESTO

Single-acting, air connection as per VDI/VDE 3845, Namur valves can be directly flange-mounted



## Data sheet

Feature	Value
Size of actuator	2
Flange hole pattern	F03
Swivel angle	90 deg
Fitting connection conforms to standard	ISO 5211
Cushioning	No cushioning
Assembly position	Any
Mode of operation	single-acting
Design structure	Rack and pinion
Position detection	No
Closing direction	Spring force, closing
Valve connection conforms to standard	VDI/VDE 3845 (NAMUR)
Operating pressure	2 ... 10 bar
Operating medium	Compressed air in accordance with ISO8573-1:2010 [7:4:4]
Note on operating and pilot medium	Lubricated operation possible (subsequently required for further operation)
Corrosion resistance classification CRC	3
Ambient temperature	-20 ... 80 °C
Torque at 6 bar	11.7 Nm
Spring return moment	4.5 Nm
Air consumption at 6 bar per cycle 0°-90°-0°	1.2 l
Product weight	600 g
Shaft connection	V09
Pneumatic connection	Sub-base G1/8
Materials note	Contains PWIS substances
Materials information for drive shaft	Aluminium Anodised
Materials information for cover	PA
Materials information for seals	NBR
Materials information, housing	Aluminium Anodised