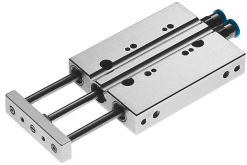


# Mini guided drive DFC-10-30-P-A-GF

Part number: 189472

FESTO



## Data sheet

Feature	Value
Distance from centre of gravity of load to yoke plate xs	15 mm
Stroke	30 mm
Piston diameter	10 mm
Operating mode, drive unit	Yoke
Cushioning	Elastic cushioning rings/plates at both ends
Mounting position	optional
Guide	Plain-bearing guide
Design	Guidance
Position detection	Via proximity switch
Operating pressure	0.1 MPa...1 MPa 1 bar...10 bar
Max. speed	1 m/s
Mode of operation	Double-acting
Operating medium	Compressed air to ISO 8573-1:2010 [7:4:4]
Note on operating and pilot medium	Lubricated operation possible (in which case lubricated operation will always be required)
Corrosion resistance class CRC	2 - Moderate corrosion stress
LABS (PWIS) conformity	VDMA24364-B2-L
Ambient temperature	-5 °C...60 °C
Impact energy in end positions	0,05 Nm
Max. moment Mx	0.4 Nm
Max. effective load dependent upon stroke at defined distance xs	12.2 N
Theoretical force at 0.6 MPa (6 bar, 87 psi), return stroke	35 N
Theoretical force at 0.6 MPa (6 bar, 87 psi), advance stroke	47 N
Moving mass	27.2 g
Moving mass for 0 mm stroke	27.2 g
Additional moving mass per 10 mm stroke	7.2 g
Product weight	134 g
Pneumatic connection	M5
Material cover	Wrought aluminium alloy
Material seals	NBR
Material housing	Wrought aluminium alloy

Feature	Value
Material piston rod	High-alloy stainless steel