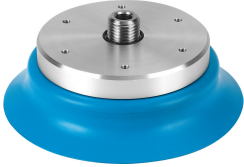


Suction cup complete ESS-80-EU

Part number: 189359

FESTO



Data sheet

Feature	Value
Min. workpiece radius	160 mm
Nominal size	6 mm
Suction cup diameter	80 mm
Suction cup volume	51.61 cm ³
Position of connection	Top
Mounting position	optional
Correlation to suction-cup holder	Size 5
Suction cup shape	Round extra deep
Operating pressure	-95 kPa...0 kPa -0.95 bar...0 bar -13.775 psi...0 psi
Nominal operating pressure	-70 kPa -0.7 bar -10.15 psi
Operating medium	Atmospheric air based on ISO 8573-1:2010 [7:::]
Corrosion resistance class CRC	1 - Low corrosion stress
LABS (PWIS) conformity	VDMA24364 zone III
Suitable for use with food	See supplementary material information
Ambient temperature	-20 °C...60 °C
Holding force at nominal operating pressure	275 N
Lateral force at nominal operating pressure	136.5 N
Product weight	141 g
Type of mounting	Via vacuum port
Vacuum connection	M10
Colour	Blue
Shore hardness	60 +/- 5

Feature	Value
Material screwed plug	POM Nickel-plated steel Steel, galvanised and chrome-plated
Note on materials	RoHS-compliant
Material suction cup	PUR