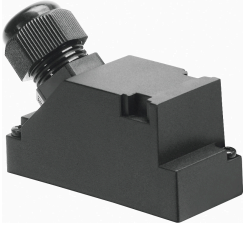


Connecting cable KMP3-25P-16-10

Part number: 18625

FESTO



Data sheet

Feature	Value
Based on standard	DIN 41652
Cable designation	With accessories
Frequency of connection	50
Product weight	1303 g
Electrical connection 1, function	Field device side
Electrical connection 1, design	Angular
Electrical connection 1, connection type	Socket
Electrical connection 1, cable outlet	Angled
Electrical connection 1, connector system	Sub-D
Electrical connection 1, number of connections/cores	25
Electrical connection 1, used connections/cores	18
Electrical connection 1, type of mounting	2x screw M3
Electrical connection 2, function	Controller side
Electrical connection 2, connection type	Cable
Electrical connection 2, connector system	Open end
Electrical connection 2, number of connections/cores	18
Electrical connection 2, used connections/cores	18
Operational voltage range DC	0 V...30 V
Nominal operating voltage DC	24 V
Current rating at 40° C	3 A
Immunity to surge	1 kV
Cable length	10 m
Cable characteristic	Standard
Test conditions cable	Test conditions on request
Bending radius, fixed cable	45 mm
Bending radius, moving cable	90 mm
Cable diameter	8.5 mm
Cable diameter tolerance	± 0.5 mm
Cable structure	18 x 0.34 mm ²
Nominal cross section conductor	0.34 mm ²
Wire ends	Cut off bluntly

Feature	Value
Degree of protection	IP65
Note on degree of protection	In assembled state
Ambient temperature	-25 °C...70 °C
Ambient temperature with moving cable	-5 °C...70 °C
Storage temperature	-25 °C...75 °C
CE mark (see declaration of conformity)	In accordance with EU RoHS Directive
CE marking (see declaration of conformity)	To UK RoHS instructions
LABS (PWIS) conformity	VDMA24364-B2-L
Note on materials	RoHS-compliant
Pollution degree	3
Material cable sheath	PVC
Cable sheath colour	grey
Material housing	PA
Material seals	NBR
Material electrical contact	Gold-plated copper alloy