

# solenoid valve

## CPV18-M1H-2X2-GLS-1/4

Part number: 185886

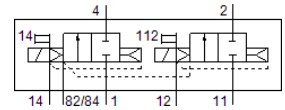
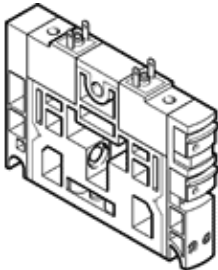
Classic - do not use for new projects

FESTO

For valve terminal CPV. The valve housing contains two 2/2-way valves, both of which are normally closed.

This type is suitable for vacuum.

Modern alternatives can be found by entering the first four characters of the type code in the search field.



## Data sheet

Feature	Value
Valve function	2x2/2 closed, monostable
Type of actuation	electrical
Valve size	18 mm
Standard nominal flow rate	1,600 l/min
Operating pressure MPa	-0.09 ... 1 MPa
Operating pressure	-0.9 ... 10 bar
Design structure	Piston slide
Type of reset	Air spring
Authorisation	C-Tick
Protection class	IP65
Nominal size	8 mm
Exhaust-air function	not throttleable
Sealing principle	soft
Assembly position	Any
Manual override	detenting Pushing
Type of piloting	Piloted
Pilot air supply	external Internal
Flow direction	non reversible
Overlap	Positive overlap
Pilot pressure MPa	0.3 ... 0.8 MPa
Pilot pressure	3 ... 8 bar
b value	0.41
C value	6.3 l/sbar
Switching time off	20 ms
Switching time on	14 ms
Duty cycle	100 %
Electrical power consumption	1.5 W
Operating medium	Compressed air in accordance with ISO8573-1:2010 [7:4:4]
Note on operating and pilot medium	Lubricated operation possible (subsequently required for further operation)
Corrosion resistance classification CRC	2 - Moderate corrosion stress
PWIS conformity	VDMA24364-B1/B2-L
Storage temperature	-20 ... 40 °C
Medium temperature	-5 ... 50 °C
Ambient temperature	-5 ... 50 °C
Product weight	260 g
Mounting type	with through hole
Auxiliary pilot air port 12/14	Common line

Feature	Value
Pilot exhaust port 82/84	Common line
Pneumatic connection, port 1	Common line
Pneumatic connection, 11	Common line
Pneumatic connection, port 2	G1/4
Pneumatic ports 3/5 combined	Common line
Pneumatic connection, port 4	G1/4
Materials note	Conforms to RoHS
Material seals	HNBR NBR
Material housing	Aluminium die cast Brass POM PPS Steel