

## service unit LFR-3/4-D-MAXI-KG

Part number: 185789

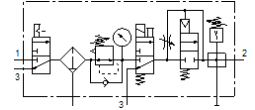
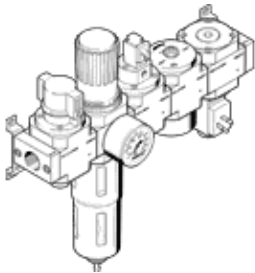
Classic - do not use for new projects

FESTO

consisting of manual on/off valve, filter regulator, on/off valve with solenoid coil 24 V DC, without socket, pressure build-up valve and distributor module, without socket, with mounting brackets.

With manual condensate drain.

Modern alternatives can be found by entering the first four characters of the type code in the search field.



## Data sheet

| Feature                                 | Value  |
|---|--|
| Size                                    | Maxi   |
| Series                                  | D  |
| Actuator lock                           | Rotary knob with lock  |
| Assembly position                       | Vertical +/- 5°  |
| Grade of filtration                     | 40 µm  |
| Condensate drain                        | manual rotary  |
| Design structure                        | Branching module<br>Pressure sensor<br>On/off valve<br>Filter regulator with pressure gauge<br>Safety start-up valve |
| Max. condensate volume                  | 80 cm <sup>3</sup>   |
| Bowl guard                              | Metal bowl guard   |
| Pressure gauge                          | with pressure gauge  |
| Operating pressure                      | 3 ... 16 bar   |
| Pressure regulation range               | 2.5 ... 12 bar   |
| Max. pressure hysteresis                | 0.25 bar   |
| Standard nominal flow rate              | 4,900 l/min  |
| Operating medium                        | Compressed air in accordance with ISO8573-1:2010 [-:--]<br>Inert gases   |
| Corrosion resistance classification CRC | 2 - Moderate corrosion stress  |
| PWIS conformity                         | VDMA24364-B1/B2-L  |
| Air purity class at output              | Compressed air in accordance with ISO8573-1:2010 [7:8:4]<br>Inert gases  |
| Medium temperature                      | -10 ... 60 °C  |
| Ambient temperature                     | -10 ... 60 °C  |
| Product weight                          | 5,200 g  |
| Mounting type                           | Line installation<br>with accessories<br>Optional  |
| Pneumatic connection, port 1            | G3/4   |
| Pneumatic connection, port 2            | G3/4   |
| Material housing                        | Zinc die-casting   |
| Material bowl                           | PC   |