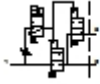




HEM-M2-G3/8-16230

Pressure build-up valve

| Feature | Data/description |
|---|--|
| Exhaust-air function | throttleable |
| Type of actuation | electrical |
| Sealing principle | soft |
| Assembly position | Vertical +/- 5° |
| Manual override | resetting |
| Design structure | Poppet seat |
| Type of reset | mechanical spring |
| Type of piloting | Piloted |
| Flow direction | non reversible |
| Valve function | 3/2 monostable closed |
| Operating pressure | 2 - 16 bar |
| b value | 0,6 |
| C value | 12 l/sbar |
| Standard nominal flow rate | 3.600 l/min |
| Characteristic coil data | 230V AC: 50Hz, AL7,5W,HL5W 230V AC: 60Hz, AL5W,HL3,7W |
| Corrosion resistance classification CRC | 2 |
| Medium temperature | -10 - 60 °C |
| Protection class | IP65 |
| Ambient temperature | -10 - 50 °C |
| Product weight | 1.046 g |
| Electrical connection | Plug to DIN 43650 Cubic design |



Data sheet

Part no.: **183826**

Page:2

HEM-M2-G3/8-16230**Pressure build-up valve**

| Feature | Data/description |
|---------------------------------|--------------------------|
| | Design A |
| Mounting type | Line installation |
| Pneumatic connection, port 1 | G3/8 |
| Pneumatic connection, port 2 | G3/8 |
| Pneumatic connection, port 3 | G3/8 |
| Materials note | Contains PWIS substances |
| Materials information for seals | NBR |
| Materials information, housing | Aluminium |