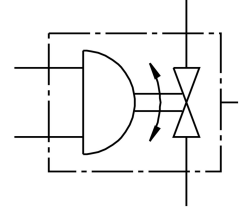


Ball valve actuator unit VZBA-21/2"-WW-63-T-22-F0710-V4V4T-PP106-R-90-C **FESTO**

Part number: 1810738



Data sheet

| Feature | Value |
|------------------------------------|--|
| Design | 2-way ball valve Semi-rotary drive |
| Type of actuation | Pneumatic |
| Mounting position | optional |
| Type of mounting | In-line installation |
| Connection Process valve | Weld-on ends/weld-on ends |
| Switching position indicator | Slot direction = flow direction |
| Nominal size DN | 65 |
| Operating pressure | 6 bar...8.4 bar |
| Nominal pressure PN | 63 |
| Medium | Compressed air to ISO 8573-1:2010 [-:~:] Inert gases Water – no water vapour Neutral fluids |
| Operating medium | Compressed air to ISO 8573-1:2010 [7:4:4] |
| Note on operating and pilot medium | Lubricated operation possible (in which case lubricated operation will always be required) |
| Media temperature | -10 °C...200 °C |
| Ambient temperature | -10 °C...80 °C |
| Flow rate Kv | 507 m³/h |
| Max. surface temperature assembly | TX |
| explosion group assembly | IIC, IIIC |
| Note on materials | RoHS-compliant |
| LABS (PWIS) conformity | VDMA24364 zone III |
| Material housing | High-alloy stainless steel |
| Material number housing | 1.4408 |
| Material seals | PTFE PTFE reinforced |
| Material ball | High-alloy stainless steel |
| Material number ball | 1.4408 |
| Material shaft | High-alloy stainless steel |
| Material number shaft | 1.4401 |

| Feature | Value |
|--------------------------------|--|
| Product weight | 11700 g |
| Explosion protection | Zone 1 (ATEX) Zone 2 (ATEX) Zone 21 (ATEX) Zone 22 (ATEX) |
| Explosion ambient temperature | -10°C ≤ Ta ≤ +60°C |
| Corrosion resistance class CRC | 3 - high corrosion stress |