

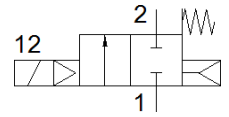
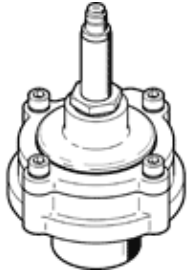
pulse valve

VZWE-F-M22C-M-G1-250-H

Part number: 1795190
Product to be discontinued

FESTO

Type to be discontinued. Available until 2023. See Support Portal for alternative products.



Data sheet

Feature	Value
Design structure	Straight version with flange Diaphragm valve
Type of actuation	electrical
Sealing principle	soft
Assembly position	Any
Mounting type	Tightened with thread
Process valve connection 1	G1
Process valve connection 2	Flange diameter: 59 mm
Nominal size	25 mm
Valve function	2/2 closed, monostable
Manual override	None
Flow direction	non reversible
Medium	Compressed air in accordance with ISO8573-1:2010 [7:4:4]
Differential pressure	0.35 bar
Type of reset	mechanical spring
Type of piloting	Piloted
Medium pressure	0.35 ... 8 bar
Note on operating and pilot medium	Lubricated operation not possible
Ambient temperature	-20 ... 60 °C
Flow rate Kv	22 m3/h
Switching time on	≤ 30 ms
Switching time off	≤ 100 ms
Materials note	Conforms to RoHS
PWIS conformity	VDMA24364 zone III
Material housing	Aluminium die cast
Material number for housing	EN AC-47100D
Material seals	NBR
Material screws	High alloy steel, non-corrosive
Material number, screw	1.4301
Material plunger tube	High alloy steel
Material membrane	NBR-PA
Product weight	430 g
Protection class	IP65
Corrosion resistance classification CRC	3 - High corrosion stress
Max. tightening torque, connecting thread	200 Nm