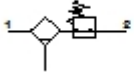




## LFR-M1-G1/4-C07T

### Filter regulator

Feature	Data/description
Size	1
Series	M
Actuator lock	Rotary knob with lock
Grade of filtration	5 µm
Condensate drain	manual rotary
Design structure	Filter regulator without pressure gauge
Max. condensate volume	10,25 cm <sup>3</sup>
Bowl guard	Plastic guard
Pressure gauge	G1/8" prepared
Pressure control range	0 - 7 bar
Inlet pressure 1	0 - 17 bar
Max. pressure hysteresis	0,4 bar
Standard nominal flow rate	1.900 l/min
Operating medium	Compressed air
Medium temperature	-10 - 80 °C
Ambient temperature	-10 - 80 °C
Product weight	358 g
Mounting type	Optional Line installation with accessories
Pneumatic connection, port 1	G1/4
Pneumatic connection, port 2	G1/4
Materials note	Contains PWIS substances
Materials information, housing	Zinc die-casting

**LFR-M1-G1/4-C07T****Filter regulator**

Feature	Data/description
Materials information for bowl	Zinc die-casting