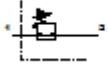


LR-M1-G1/8-04I

Pressure regulator

Feature	Data/description
Size	1
Series	M
Actuator lock	Rotary knob with lock
Assembly position	Any
Design structure	directly-controlled diaphragm regulator
Controller function	with initial pressure compensation with secondary exhaust with return flow Output pressure constant
Pressure gauge	G1/8" prepared
Pressure control range	0 - 4 bar
Inlet pressure 1	0 - 21 bar
Max. pressure hysteresis	0,4 bar
Standard nominal flow rate	800 l/min
Operating medium	Filtered compressed air, 40 µm filtration
Medium temperature	-10 - 80 °C
Ambient temperature	-10 - 80 °C
Product weight	261 g
Mounting type	Front panel installation Line installation with accessories
Pneumatic connection, port 1	G1/8
Pneumatic connection, port 2	G1/8
Materials note	Contains PWIS substances
Materials information for control panel	POM
Materials information for seals	NBR

**LR-M1-G1/8-04I****Pressure regulator**

Feature	Data/description
Materials information, housing	Zinc die-casting
Materials information for membrane	NBR Brass