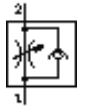
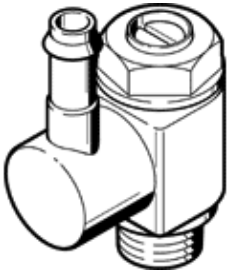


One-way flow control valve GRGZ-M5-PK-3-LF-C

Part number: 175061

FESTO

Supply air flow control with precision flow control valve.



Data sheet

| Feature | Value |
|---|--|
| Valve function | One-way flow control function |
| Pneumatic connection, port 1 | PK-3 |
| Pneumatic connection, port 2 | M5 |
| Adjusting element | Slotted head screw |
| Mounting type | Threaded |
| Standard nominal flow rate in flow control direction | 48 l/min |
| Standard nominal flow rate in non-return direction | 35 ... 58 l/min |
| Operating pressure | 0.2 ... 10 bar |
| Ambient temperature | -10 ... 60 °C |
| Operating medium | Filtered, unlubricated compressed air, 40 µm filtration Filtered, lubricated compressed air, 40 µm filtration |
| Assembly position | Any |
| Standard flow rate in direction of flow control: 6 -> 0 bar | 80 l/min |
| Standard flow rate in blocked direction: 6 -> 0 bar | 60 ... 100 l/min |
| Medium temperature | -10 ... 60 °C |
| Max. tightening torque | 1.5 Nm |
| Product weight | 7 g |
| Materials information for screw-in stud | Nickel plated Brass |
| Materials information for seals | NBR |
| Regulating screw material data | Brass |
| Swivel joint material data | Zinc die-casting |