

solenoid valve

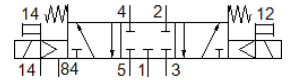
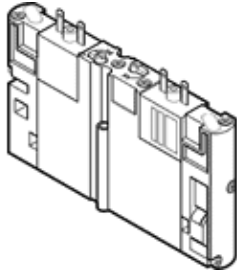
CPA14-M1H-5/3-GS

Part number: 173945
Product to be discontinued

FESTO

This type is suitable for vacuum.

Type to be discontinued. Available until 2018. See Support Portal for alternative products.



Data sheet

Feature	Value
Valve function	5/3 closed
Type of actuation	electrical
Width	14 mm
Standard nominal flow rate	550 l/min
Operating pressure	-0.9 ... 10 bar
Design structure	Piston slide
Type of reset	Air spring
Nominal size	5 mm
Exhaust-air function	not throttleable
Sealing principle	soft
Assembly position	Any
Manual override	with accessories, detenting
Type of piloting	Piloted
Flow direction	non reversible
Pilot pressure	3 ... 8 bar
b value	0.27
C value	2.4 l/sbar
Switching time off	30 ms
Switching time on	13 ms
Operating medium	Compressed air in accordance with ISO8573-1:2010 [7:4:4]
Note on operating and pilot medium	Lubricated operation possible (subsequently required for further operation)
Corrosion resistance classification CRC	2
Medium temperature	-5 ... 50 °C
Ambient temperature	-5 ... 50 °C
Mounting type	with through hole
Pneumatic connection, port 1	Sub-base
Pneumatic connection, port 2	Sub-base
Pneumatic connection, port 3	Sub-base
Pneumatic connection, port 4	Sub-base
Pneumatic connection, port 5	Sub-base
Materials information for seals	NBR
Materials information, housing	Aluminium die cast