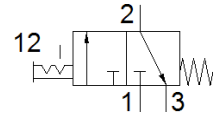
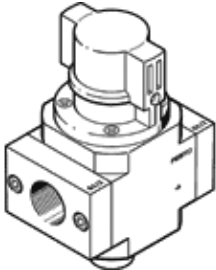


on-off valve HE-3/4-D-MAXI-NPT

Part number: 173898
Classic - do not use for new projects

FESTO

For service units, with threaded connecting plate
Modern alternatives can be found by entering the first four characters of the type code in the search field.



Data sheet

Feature	Value
Grid dimension	65 mm
Design structure	Piston slide
Type of actuation	manual
Sealing principle	soft
Exhaust-air function	not throttleable
Manual override	None
Valve function	3/2 bistable
Operating pressure	0 ... 16 bar
C value	26.8 l/sbar
b value	0.35
Standard nominal flow rate	6,000 l/min
Duty cycle	100 %
Operating medium	Compressed air in accordance with ISO8573-1:2010 [7:4:4] Inert gases
Note on operating and pilot medium	Lubricated operation possible (subsequently required for further operation)
Corrosion resistance classification CRC	2 - Moderate corrosion stress
Materials note	Conforms to RoHS
PWIS conformity	VDMA24364-B1/B2-L
Medium temperature	-10 ... 60 °C
Ambient temperature	-10 ... 60 °C
Mounting type	Line installation with accessories
Assembly position	Any
Flow direction	non reversible
Product weight	796 g
Pneumatic connection, port 1	3/4 NPT
Pneumatic connection, port 2	3/4 NPT
Pneumatic connection, port 3	G3/8
Air purity class at output	Compressed air in accordance with ISO8573-1:2010 [7:4:4] Inert gases
Material seals	NBR
Material housing	Aluminium die cast