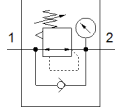
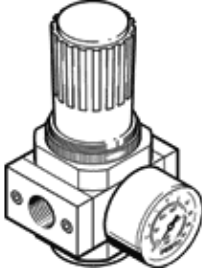


pressure regulator LR-1-D-MAXI-NPT

Part number: 173672
Classic - do not use for new projects

FESTO

With pressure gauge, working pressure up to 12 bar.
Modern alternatives can be found by entering the first four characters of the type code in the search field.



Data sheet

Feature	Value
Size	Maxi
Series	D
Assembly position	Any
Controller function	Output pressure constant
Operating pressure	16 bar
Max. pressure hysteresis	0.4 bar
Standard nominal flow rate	11,500 l/min
Operating medium	Compressed air in accordance with ISO8573-1:2010 [7:4:4] Inert gases
Note on operating and pilot medium	Lubricated operation possible (subsequently required for further operation)
PWIS conformity	VDMA24364-B1/B2-L
Air purity class at output	Compressed air in accordance with ISO8573-1:2010 [7:4:4] Inert gases
Medium temperature	-10 ... 60 °C
Ambient temperature	-10 ... 60 °C
Product weight	800 g
Mounting type	Front panel installation Line installation Optional
Pneumatic connection, port 1	1 NPT
Pneumatic connection, port 2	1 NPT
Materials note	Conforms to RoHS
Material seals	NBR
Material housing	Zinc die-casting