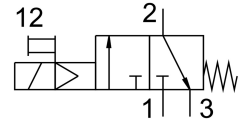


On/off valve HEE-3/4-D-MIDI-24

Part number: 172947

FESTO



Data sheet

Feature	Value
Design	Piston gate valve
Type of actuation	Electric
Sealing principle	Soft
Exhaust-air function	Without flow control option
Manual override	Detenting
Type of reset	Mechanical spring
Type of piloting	Pilot actuated
Valve function	3/2-way, closed, monostable
Operating pressure	2.5 bar...16 bar
C value	17.3 l/sbar
b value	0.41
Standard nominal flow rate	3800 l/min
Duty cycle	100%
Characteristic coil data	24 V DC: 3.0 W
Permissible voltage fluctuations	+/- 10 %
Operating medium	Compressed air to ISO 8573-1:2010 [7:4:4] Inert gases
Note on operating and pilot medium	Lubricated operation possible (in which case lubricated operation will always be required)
Corrosion resistance class CRC	2 - Moderate corrosion stress
Note on materials	RoHS-compliant
LABS (PWIS) conformity	VDMA24364-B1/B2-L
Media temperature	-10 °C...60 °C
Ambient temperature	-10 °C...60 °C
Type of mounting	In-line installation With accessories
Mounting position	optional
Flow direction	Non-reversible
Product weight	500 g
Pneumatic connection, port 1	G3/4
Pneumatic connection, port 2	G3/4
Pneumatic connection, port 3	G1/4

Feature	Value
Air purity class at output	Compressed air to ISO 8573-1:2010 [7:4:4] Inert gases
Electrical connection	Type C Plugs To DIN EN 175301-803
Signal status display	With accessories
Material seals	NBR
Material housing	Die-cast aluminium