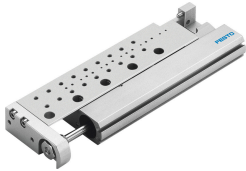


# Mini slide SLF-16-20-P-A

Part number: 170512

FESTO



## Data sheet

Feature	Value
Stroke	20 mm
Adjustable end-position range/length	5 mm
Piston diameter	16 mm
Operating mode, drive unit	Yoke
Cushioning	Elastic cushioning rings/plates at both ends
Mounting position	optional
Guide	Ball bearing cage guide
Design	Yoke Piston Piston rod Ball roller guide Slide
Position detection	Via proximity switch
Operating pressure	0.1 MPa...1 MPa 1 bar...10 bar 14.5 psi...145 psi
Mode of operation	Double-acting
Operating medium	Compressed air to ISO 8573-1:2010 [7:4:4]
Note on operating and pilot medium	Lubricated operation possible (in which case lubricated operation will always be required)
Corrosion resistance class CRC	0 - No corrosion stress
LABS (PWIS) conformity	VDMA24364-B2-L
Ambient temperature	-20 °C...60 °C
Impact energy in end positions	0,1 Nm
Max. force F <sub>y</sub>	370 N
Max. force F <sub>z</sub>	370 N
Max. moment M <sub>x</sub>	1.7 Nm
Max. moment M <sub>y</sub>	1.7 Nm
Max. moment M <sub>z</sub>	1.3 Nm
Theoretical force at 0.6 MPa (6 bar, 87 psi), return stroke	104 N
Theoretical force at 0.6 MPa (6 bar, 87 psi), advance stroke	121 N
Moving mass	109 g
Product weight	291 g

<b>Feature</b>	<b>Value</b>
Basic weight for 0 mm stroke	291 g
alternative connections	See product drawing
Type of mounting	With through-hole
Pneumatic connection	M5
Note on materials	RoHS-compliant
Material cover	Wrought aluminium alloy
Material seals	HNBR
Material housing	Wrought aluminium alloy
Material piston rod	High-alloy stainless steel