

# solenoid valve

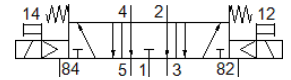
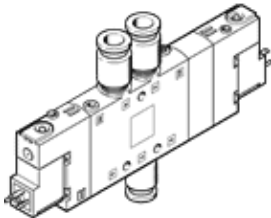
## CPE18-M3H-5/3E-QS-10

Part number: 170333  
Classic - do not use for new projects

FESTO

High component density

Modern alternatives can be found by entering the first four characters of the type code in the search field.



## Data sheet

| Feature                                      | Value  |
|--|--|
| Valve function                               | 5/3 exhausted  |
| Type of actuation                            | electrical   |
| Width  | 18 mm  |
| Standard nominal flow rate                   | 1,000 l/min  |
| Operating pressure MPa                       | 0.25 ... 1 MPa   |
| Operating pressure                           | 2.5 ... 10 bar   |
| Design structure                             | Piston slide   |
| Type of reset                                | mechanical spring  |
| Authorisation                                | c UL us - Recognized (OL)  |
| Maritime classification                      | see certificate  |
| CE mark (see declaration of conformity)      | to EU directive low-voltage devices  |
| UKCA marking (see declaration of conformity) | To UK instructions for electrical equipment  |
| Protection class                             | IP65<br>with plug socket<br>to IEC 60529   |
| Nominal size                                 | 8 mm   |
| Exhaust-air function                         | throttleable   |
| Sealing principle                            | soft   |
| Assembly position                            | Any  |
| Manual override                              | with accessories, detenting<br>Pushing   |
| Type of piloting                             | Piloted  |
| Pilot air supply                             | Internal   |
| Flow direction                               | non reversible   |
| Valve position identification                | Inscription label holder   |
| Overlap                                      | Positive overlap   |
| Switching time off                           | 38 ms  |
| Switching time on                            | 20 ms  |
| Duty cycle                                   | 100 %  |
| Max. positive test pulse with logic 0        | 3,300 µs   |
| Max. negative test pulse with logic 1        | 3,100 µs   |
| Characteristic coil data                     | 230 V AC: 50/60 Hz, pick-up power 3 VA, holding power 2.4 VA                                   |
| Permissible voltage fluctuation              | -15 % / +10 %  |
| Operating medium                             | Compressed air in accordance with ISO8573-1:2010 [7:4:4]                                       |
| Note on operating and pilot medium           | Lubricated operation possible (subsequently required for further operation)                    |
| Vibration resistance                         | Transport application test at severity level 2 in accordance with FN 942017-4 and EN 60068-2-6 |
| Shock resistance                             | Shock test with severity level 2 in accordance with FN 942017-5 and EN 60068-2-27              |
| Corrosion resistance classification CRC      | 2 - Moderate corrosion stress  |
| PWIS conformity                              | VDMA24364-B1/B2-L  |

| Feature                      | Value                                |
|------------------------------|--------------------------------------|
| Medium temperature           | -5 ... 50 °C                         |
| Ambient temperature          | -5 ... 50 °C                         |
| Electrical connection        | Plug pattern type C to EN 175301-803 |
| Mounting type                | with through hole                    |
| Pilot exhaust port 82        | M5                                   |
| Pilot exhaust port 84        | M5                                   |
| Pilot air port 12            | M5                                   |
| Pilot air port 14            | M5                                   |
| Pneumatic connection, port 1 | QS-10                                |
| Pneumatic connection, port 2 | QS-10                                |
| Pneumatic connection, port 3 | G1/4                                 |
| Pneumatic connection, port 4 | QS-10                                |
| Pneumatic connection, port 5 | G1/4                                 |
| Materials note               | Conforms to RoHS                     |
| Material seals               | NBR                                  |
| Material housing             | Aluminium die cast                   |