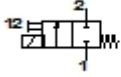


MDH-2-2,2-QS-6-24AC

Solenoid valve

Feature	Data/description
Width	42 mm
Nominal size	2,2 mm
Type of actuation	electrical
Sealing principle	soft
Assembly position	Any
Manual override	with accessories, detenting
Design structure	Poppet seat
Type of reset	mechanical spring
Type of piloting	direct
Flow direction	non reversible
Valve function	2/2 monostable
Operating pressure	-0,9 - 8 bar
b value	0,14
C value	0,53 l/sbar
Standard nominal flow rate	113 l/min
Switching time off	9 ms
Switching time on	11 ms
Duty cycle	100%
Characteristic coil data	24V AC: 50/60Hz, AL12W,HL8W
Operating medium	Neutral gases Dried compressed air, lubricated or unlubricated
Corrosion resistance classification CRC	2
Medium temperature	-5 - 50 °C



MDH-2-2,2-QS-6-24AC

Solenoid valve

Feature	Data/description
Protection class	IP65
Ambient temperature	-5 - 60 °C
Product weight	370 g
Electrical connection	Plug to DIN 43650 Cubic design Design A
Mounting type	with through hole
Pneumatic connection, port 1	QS-6
Pneumatic connection, port 2	QS-6
Materials information for sub-base	POM
Materials information for seals	NBR
Materials information, housing	POM