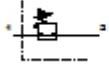


LR-1-D-O-MAXI-CT Pressure regulator

Feature	Data/description
Size	Maxi
Series	D
Actuator lock	Rotary knob with lock
Assembly position	Any
Design structure	Piloted piston regulator
Controller function	with secondary exhaust Output pressure constant
Pressure gauge	G1/4" prepared
Pressure control range	0,5 - 12 bar
Inlet pressure 1	0 - 16 bar
Max. pressure hysteresis	0,4 bar
Standard nominal flow rate	11.500 l/min
Operating medium	Filtered, unlubricated compressed air, 40 µm filtration Filtered, lubricated compressed air, 40 µm filtration
Medium temperature	-10 - 60 °C
Ambient temperature	-10 - 60 °C
Product weight	1.100 g
Mounting type	Front panel installation Line installation
Pneumatic connection, port 1	G1
Pneumatic connection, port 2	G1
Materials note	Copper and PTFE-free
Materials information for sub-base	Zinc die-casting
Materials information for seals	NBR



LR-1-D-O-MAXI-CT

Pressure regulator

Feature	Data/description
Materials information, housing	Zinc die-casting