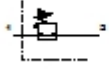




## LR-3/4-D-O-MAXI-CT Pressure regulator

| Feature                            | Data/description   |
|------------------------------------|--|
| Size                               | Maxi   |
| Series                             | D  |
| Actuator lock                      | Rotary knob with lock  |
| Assembly position                  | Any  |
| Design structure                   | Piloted piston regulator   |
| Controller function                | with secondary exhaust<br>Output pressure constant   |
| Pressure gauge                     | G1/4" prepared   |
| Pressure control range             | 0,5 - 12 bar   |
| Inlet pressure 1                   | 0 - 16 bar   |
| Max. pressure hysteresis           | 0,4 bar  |
| Standard nominal flow rate         | 11.000 l/min   |
| Operating medium                   | Filtered, unlubricated compressed air, 40 µm filtration<br>Filtered, lubricated compressed air, 40 µm filtration |
| Medium temperature                 | -10 - 60 °C  |
| Ambient temperature                | -10 - 60 °C  |
| Product weight                     | 1.100 g  |
| Mounting type                      | Front panel installation<br>Line installation  |
| Pneumatic connection, port 1       | G3/4   |
| Pneumatic connection, port 2       | G3/4   |
| Materials note                     | Copper and PTFE-free   |
| Materials information for sub-base | Zinc die-casting   |
| Materials information for seals    | NBR  |



## **LR-3/4-D-O-MAXI-CT**

### **Pressure regulator**

| <b>Feature</b>                 | <b>Data/description</b> |
|--------------------------------|-------------------------|
| Materials information, housing | Zinc die-casting        |