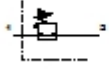




## LR-1/8-D-O-MINI-CT Pressure regulator

Feature	Data/description
Size	Mini
Series	D
Actuator lock	Rotary knob with lock
Assembly position	Any
Design structure	directly-controlled diaphragm regulator
Controller function	with initial pressure compensation with secondary exhaust Output pressure constant
Pressure gauge	G1/8" prepared
Pressure control range	0,5 - 12 bar
Inlet pressure 1	1 - 16 bar
Max. pressure hysteresis	0,2 bar
Standard nominal flow rate	800 l/min
Operating medium	Filtered, unlubricated compressed air, 40 µm filtration Filtered, lubricated compressed air, 40 µm filtration
Medium temperature	-10 - 60 °C
Ambient temperature	-10 - 60 °C
Product weight	350 g
Mounting type	Front panel installation Line installation with accessories
Pneumatic connection, port 1	G1/8
Pneumatic connection, port 2	G1/8
Materials note	Copper and PTFE-free
Materials information for sub-base	Zinc die-casting
Materials information for seals	NBR



## **LR-1/8-D-O-MINI-CT**

### **Pressure regulator**

<b>Feature</b>	<b>Data/description</b>
Materials information, housing	Zinc die-casting