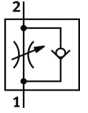
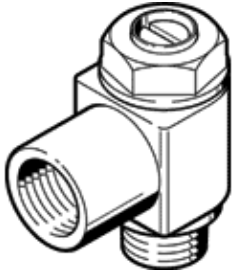


One-way flow control valve GRLA-3/8-B-CT

Part number: 165662

FESTO

For exhaust air flow control, with swivel joint.
Products to be discontinued. Available until 2011.



Data sheet

Feature	Value
Valve function	One-way flow control function for exhaust air
Pneumatic connection, port 1	G3/8
Pneumatic connection, port 2	G3/8
Adjusting element	Slotted head screw
Mounting type	Threaded
Standard nominal flow rate in flow control direction	1,450 l/min
Standard nominal flow rate in non-return direction	970 ... 1,600 l/min
Operating pressure	0.3 ... 10 bar
Ambient temperature	-10 ... 60 °C
Operating medium	Filtered, unlubricated compressed air, 40 µm filtration Filtered, lubricated compressed air, 40 µm filtration
Authorisation	Germanischer Lloyd
Assembly position	Any
Standard flow rate in direction of flow control: 6 -> 0 bar	2,300 l/min
Standard flow rate in blocked direction: 6 -> 0 bar	1,540 ... 2,540 l/min
Medium temperature	-10 ... 60 °C
Max. tightening torque	20 Nm
Product weight	97 g
Materials information for screw-in stud	Wrought Aluminium alloy
Materials note	Free of copper and PTFE
Materials information for seals	NBR
Regulating screw material data	Wrought Aluminium alloy
Swivel joint material data	Zinc die-casting