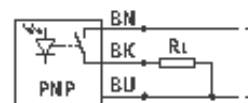
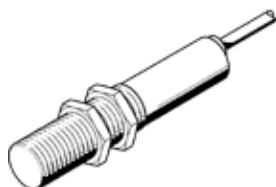


Diffuse light sensor SOEG-RT-M12-PS-K-L

Part number: 165338

FESTO



Data sheet

Feature	Value
Conforms to standard	DIN EN 60947-5-2
Short circuit strength	Pulsing
Type of light	Infrared
Measurement method	Diffuse reflection sensor
Switching element function	Light switching
Polarity protected	for all electrical connections
Setting range lower limit	10 mm
Upper limit of adjustment range	200 mm
Setting options	Potentiometer
Operating reserve display	Yellow LED (doesn't blink)
Operating status display	Yellow LED
Max. switching frequency	250 Hz
Operating voltage range DC	10 ... 30 V
Idle current	30 mA
Max. output current	200 mA
Residual ripple	10 %
Switch output	PNP
Voltage drop	1.8 V
CE Symbol	according to EU-EMV guideline
Corrosion resistance classification CRC	2
Protection class	IP65
Ambient temperature	-5 ... 55 °C -5 ... 55 °C
Tightening torque	10 Nm
Product weight	100 g
Working range	0 ... 200 mm
Electrical connection	Cable 3-core
Cable length	2.5 m
Mounting type	with lock nut
Materials information for locknut	Brass Chromed-plated
Materials information, housing	Brass Chromed-plated
Materials information, cable sheaths	PUR