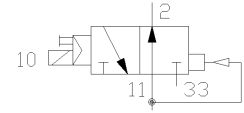


Solenoid CPE32-M1H-30L-QS12

Part number: 165028

FESTO



Datasheet

Feature	Value
Switching function symbol	3/2-way valve, normally open
Switching function short code	3/2
Direction of flow reversible	No
Operating principle	Slide
Form function component	Piston
Freedom from overlap	Yes
Type of pilot control	Indirect
Type of setting	Monostable
Type of reset	Air spring
Type of mounting	Screw
Number mounting options	1
Fitting position, any	Yes
Nominal size	15 mm
Operating pressure min.	2 bar
Operating pressure max.	10 bar
Minimum ambient temperature	0 °C
Maximum ambient temperature	50 °C
Minimum temperature of medium	0 °C
Maximum temperature of medium	50 °C
Connection type main connections	Push-in
Main port ducted exhaust	Yes
Connection type aux. pilot air supply	Internal
Connection type aux. pilot air exhaust	Push-in
Type of fixture, air supply and exhaust	Internal auxiliary pilot air, ducted exhaust air
Nominal tubing size, main port	12
Actuation/reset	Single solenoid, air spring return
Manual override	Non-detenting (can be rotated to detent)
Operating status display	No
Material of cap	PA-polymer
Material of housing	AL, die-cast metal
Material of seals	NBR-Elastomer
Silicone status	Free
Standard nominal flow rate 1 - 2	4500 l/min

Feature	Value
Switching time OFF/OVER (dom.)	33 ms
Switching time OFF/OVER	58 ms
Solenoid system (dimensioning)	N1G
Type of voltage	../DC
Nominal direct current	24 V
Rating (DC)	2,5 W
Duty cycle solenoid	100 %
Medium of operation	Filtered compressed air
Degree of protection as per IEC 529 IP	..65