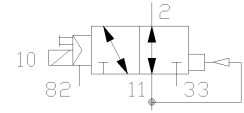
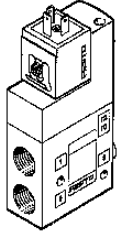


# Solenoid CPE32-M3H-3OLS-1/2

Part number: 163875

FESTO



## Datasheet

| Feature                                 | Value  |
|---|--|
| Switching function symbol               | 3/2-way valve, normally open                     |
| Switching function short code           | 3/2  |
| Direction of flow reversible            | No   |
| Operating principle                     | Slide  |
| Form function component                 | Piston   |
| Freedom from overlap                    | Yes  |
| Type of pilot control                   | Indirect   |
| Type of setting                         | Monostable                                       |
| Type of reset                           | Air spring                                       |
| Type of mounting                        | Screw  |
| Number mounting options                 | 1  |
| Fitting position, any                   | Yes  |
| Nominal size                            | 15 mm  |
| Operating pressure min.                 | -0,9 bar   |
| Operating pressure max.                 | 10 bar   |
| Minimum ambient temperature             | -10 °C   |
| Maximum ambient temperature             | 50 °C  |
| Minimum temperature of medium           | -10 °C   |
| Maximum temperature of medium           | 50 °C  |
| Start/switchover pilot pressure at D1   | 2 bar  |
| Connection type main connections        | Thread   |
| Main port ducted exhaust                | Yes  |
| Connection type aux. pilot air supply   | Internal   |
| Connection type aux. pilot air exhaust  | Thread   |
| Type of fixture, air supply and exhaust | Internal auxiliary pilot air, ducted exhaust air |
| Thread type (main ports)                | G  |
| Thread diameter (inch)                  | 1/2 inch   |
| Type of thread (auxiliary pilot air ex  | haG  |
| Thread diameter (inch)                  | 1/8 inch   |
| Standard plug pattern                   | DI50:A   |
| Actuation/reset                         | Single solenoid, air spring return               |
| Manual override                         | Non-detenting (can be rotated to detent)         |
| Operating status display                | No   |

| <b>Feature</b>                         | <b>Value</b>            |
|--|-------------------------|
| Material of cap                        | PA-polymer              |
| Material of housing                    | AL, die-cast metal      |
| Material of seals                      | NBR-Elastomer           |
| Silicone status                        | Free                    |
| Standard nominal flow rate 1 - 2       | 4500 l/min              |
| Switching time OFF/OVER (dom.)         | 33 ms                   |
| Switching time OFF/OVER                | 58 ms                   |
| Solenoid system (dimensioning)         | N1W                     |
| Type of voltage                        | AC/..                   |
| Nominal AC voltage                     | 230                     |
| Nominal pick-up power rating (AC)      | 5.0/3.7                 |
| Frequency (AC)                         | 50/60                   |
| Duty cycle solenoid                    | 100 %                   |
| Medium of operation                    | Filtered compressed air |
| Degree of protection as per IEC 529 IP | ..65                    |