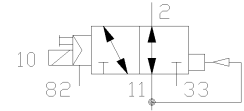
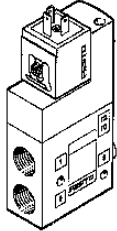


Solenoid CPE32-M2H-30LS-1/2

Part number: 163867

FESTO



Datasheet

| Feature | Value |
|---|--|
| Switching function symbol | 3/2-way valve, normally open |
| Switching function short code | 3/2 |
| Direction of flow reversible | No |
| Operating principle | Slide |
| Form function component | Piston |
| Freedom from overlap | Yes |
| Type of pilot control | Indirect |
| Type of setting | Monostable |
| Type of reset | Air spring |
| Type of mounting | Screw |
| Number mounting options | 1 |
| Fitting position, any | Yes |
| Nominal size | 15 mm |
| Operating pressure min. | -0,9 bar |
| Operating pressure max. | 10 bar |
| Minimum ambient temperature | -10 °C |
| Maximum ambient temperature | 50 °C |
| Minimum temperature of medium | -10 °C |
| Maximum temperature of medium | 50 °C |
| Start/switchover pilot pressure at D1 | 2 bar |
| Connection type main connections | Thread |
| Main port ducted exhaust | Yes |
| Connection type aux. pilot air supply | Internal |
| Connection type aux. pilot air exhaust | Thread |
| Type of fixture, air supply and exhaust | Internal auxiliary pilot air, ducted exhaust air |
| Thread type (main ports) | G |
| Thread diameter (inch) | 1/2 inch |
| Type of thread (auxiliary pilot air ex) | haG |
| Thread diameter (inch) | 1/8 inch |
| Standard plug pattern | DI50:A |
| Actuation/reset | Single solenoid, air spring return |
| Manual override | Non-detenting (can be rotated to detent) |
| Operating status display | No |

| Feature | Value |
|--|-------------------------|
| Material of cap | PA-polymer |
| Material of housing | AL, die-cast metal |
| Material of seals | NBR-Elastomer |
| Silicone status | Free |
| Standard nominal flow rate 1 - 2 | 4500 l/min |
| Switching time OFF/OVER (dom.) | 33 ms |
| Switching time OFF/OVER | 58 ms |
| Solenoid system (dimensioning) | N1W |
| Type of voltage | AC/.. |
| Nominal AC voltage | 110 |
| Nominal pick-up power rating (AC) | 5.0/3.7 |
| Frequency (AC) | 50/60 |
| Duty cycle solenoid | 100 % |
| Medium of operation | Filtered compressed air |
| Degree of protection as per IEC 529 IP | ..65 |