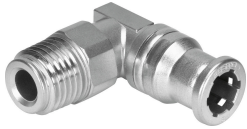


Push-in L-fitting CRQSL-3/8-10

Part number: 162876

FESTO



Data sheet

Feature	Value
Size	Standard
Nominal size	6 mm
Mounting position	optional
Design	L-shape Push-pull principle
Size of pack	1
Operating pressure complete temperature range	-0.095 MPa...1 MPa -0.95 bar...10 bar -13.775 psi...145 psi
Note on operating pressure	Water: max. 0.6 MPa at max. 50°C
Operating medium	Compressed air to ISO 8573-1:2010 [7:-:-] Water (liquid, ice-free)
Note on operating and pilot medium	Lubricated operation possible
Corrosion resistance class CRC	4 - Very high corrosion stress
LABS (PWIS) conformity	VDMA24364-B1/B2-L
Suitable for use with food	See supplementary material information
Ambient temperature	-15 °C...120 °C
Product weight	49 g
Suitable cables	PFAN
Type of mounting	External hexagon, size 17 mm
Pneumatic connection, port 1	Male thread R3/8
Pneumatic connection, port 2	For tubing outside diameter of 10 mm
Material screwed plug	High-alloy stainless steel
Note on materials	RoHS-compliant
Material housing	High-alloy stainless steel
Material release ring	High-alloy stainless steel
Material tubing seal	FPM
Material tubing clamp component	High-alloy stainless steel
Thrust ring material	High-alloy stainless steel