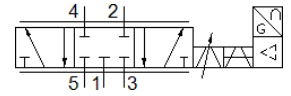
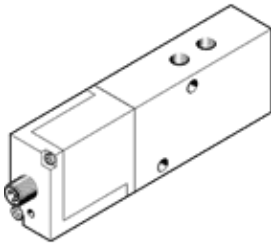


proportional directional control valve

MPYE-5-1/8-LF-420-B

Part number: 161978

FESTO



Data sheet

Feature	Value
Nominal size	4 mm
Type of actuation	electrical
Sealing principle	Hard
Assembly position	Any
Design structure	Piston slide
Type of reset	Magnetic spring
Safety instructions	MPYE safety position: If the power supply cable is interrupted, travel occurs to the closed mid-position
Type of piloting	direct
Flow direction	non reversible
Valve function	5/3 closed
Polarity protected	for setpoint value
Operating pressure MPa	0 ... 1 MPa
Operating pressure	0 ... 10 bar
b value	0.12
C value	1.65 l/sbar
Standard nominal flow rate	350 l/min
Limit frequency	95 Hz
Max. hysteresis	0.4 %
Operating voltage range DC	17 ... 30 V
Residual ripple	5 %
SETPOINT/ACTUAL values	Current type 4 - 20 mA
Authorisation	RCM Mark
KC mark	KC-EMV
CE mark (see declaration of conformity)	to EU directive for EMC in accordance with EU RoHS directive
UKCA marking (see declaration of conformity)	To UK instructions for EMC To UK RoHS instructions
Operating medium	Compressed air in accordance with ISO8573-1:2010 [6:4:4]
Note on operating and pilot medium	Lubricated operation not possible
Corrosion resistance classification CRC	2 - Moderate corrosion stress
PWIS conformity	VDMA24364-B2-L
Medium temperature	5 ... 40 °C
Protection class	IP65
Ambient temperature	0 ... 50 °C
Product weight	285 g
Electrical connection	4-pin M12x1 Plug Round design
Mounting type	with through hole
Pneumatic connection, port 1	G1/8
Pneumatic connection, port 2	G1/8
Pneumatic connection, port 3	G1/8
Pneumatic connection, port 4	G1/8
Pneumatic connection, port 5	G1/8

Feature	Value
Materials note	Conforms to RoHS
Material cover	ABS coated
Material seals	NBR
Material housing	Aluminium Anodised