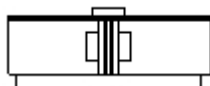


## DGPL-12--P-A-GF-B

### Linear drive

Feature	Data/description
Mode of operation	double-acting
Piston diameter	12 mm
Stroke	10,000 - 1.500,000 mm
Ambient temperature	-10 - 60 °C
Pneumatic connection	M5
Position detection	with proximity sensor
Cushioning	Flexible cushioning rings or plates at both ends (P)
Assembly position	Any
Operating pressure	2,500 - 8,000 bar
alternative connections	See product drawing
Moving mass	160,000 g
Basic weight for 0 mm stroke	390,000 g
Moving mass with 0 mm stroke	160,000 g
Additional mass factor per 10 mm of stroke	12,000 g
Theoretical force at 6 bar, advance stroke	68,000 N
Theoretical force at 6 bar, return stroke	68,000 N
Operating medium	Compressed air, filtered, unlubricated Filtered, lubricated air
Corrosion resistance classification CRC	2
Driver principle	positive-locking (slot)
Protection against torque/guide	Guide rail with slide with plain-bearing guide
Materials information for cover	Aluminium casting coated

**DGPL-12--P-A-GF-B****Linear drive**

Feature	Data/description
Materials information, housing	Aluminium Anodised
Materials information for seals	NBR TPE-U(PU)