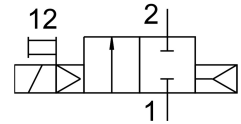
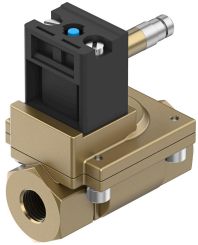


Solenoid valve MN1H-2-3/4-MS

Part number: 161731

FESTO



Data sheet

| Feature | Value |
|------------------------------------|--|
| Design | Diaphragm valve |
| Type of actuation | Electric |
| Sealing principle | Soft |
| Mounting position | optional |
| Type of mounting | In-line installation |
| Connection Process valve | G3/4 |
| Electrical connection | Type A Plugs To DIN EN 175301-803 Square design |
| Nominal size | 20 mm |
| Valve function | 2/2-way, closed, monostable |
| Manual override | Detenting via accessory Non-detenting |
| Flow direction | Non-reversible |
| Medium | Filtered compressed air, grade of filtration 200 µm |
| Exhaust-air function | Without flow control option |
| Characteristic coil data | 110 V AC: 50 Hz, pick-up power 5.0 VA, holding power 3.7 VA 110 V AC: 60 Hz, pick-up power 5.0 VA, holding power 3.7 VA 230 V AC: 50 Hz, pick-up power 5.0 VA, holding power 3.7 VA 230 V AC: 60 Hz, pick-up power 5.0 VA, holding power 3.7 VA 24 V DC: 2.5 W |
| Type of reset | Pneumatic spring |
| Type of piloting | Pilot actuated |
| Medium pressure | 0.5 bar...10 bar |
| Note on operating and pilot medium | Lubricated operation possible (in which case lubricated operation will always be required) |
| Media temperature | -10 °C...60 °C |
| Ambient temperature | -10 °C...60 °C |
| Standard nominal flow rate | 10000 l/min |
| Switching time on | 120 ms |
| Switching time off | 180 ms |
| LABS (PWIS) conformity | VDMA24364-B1/B2-L |
| Material housing | Brass |

| Feature | Value |
|-----------------------|----------------------------|
| Material screws | High-alloy stainless steel |
| Material number screw | 1.4301 |
| Product weight | 1100 g |
| Degree of protection | IP65 With plug socket |