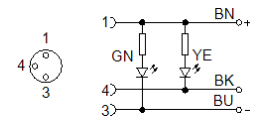
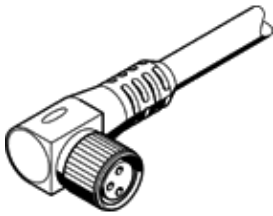


connecting cable SIM-M8-3WD-2,5-NSL-PU

Part number: 159426

FESTO

For sensors and proximity switches.



Data sheet

Feature	Value
Conforms to standard	EN 61076-2-104 EN 61984
Ready status display	Green LED
Operating status display	Yellow LED
Electrical connection	3-pin/3-wire Angled socket/open end M8x1 / -
Operating voltage range DC	10 ... 30 V
Acceptable current load at 40°C	4 A
Surge strength	0.8 kV
Cable length	2.5 m
Cable attribute	Standard
Test conditions of cable	Bending strength according to Festo standard Test conditions on request Energy chain: > 5 million cycles, bending radius 75 mm
Cable diameter	3.8 mm
Cable structure	3x0,25
Nominal conductor cross-section	0.25 mm ²
Colour code, core insulation	blue brown Black
Protection class	IP65 IP68
Ambient temperature	-25 ... 80 °C
Ambient temperature with flexible cable installation	-5 ... 80 °C
CE mark (see declaration of conformity)	in accordance with EU RoHS directive
UKCA marking (see declaration of conformity)	To UK RoHS instructions
PWIS conformity	VDMA24364-B2-L
Materials note	Conforms to RoHS Halogen-free Free of phosphoric acid ester
Degree of contamination	3
Corrosion resistance classification CRC	2 - Moderate corrosion stress
Material cable sheath	TPE-U(PU)
Cable sheath colour	Grey
Material housing	TPE-U(PU)
Housing colour	Black
Material of union nut	Nickel-plated brass
Material seals	NBR
Material electrical contact	Brass, gold-plated
Material insulation	PP