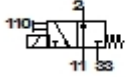




## MODH-3-2,2-230AC

### Solenoid valve

| Feature                                 | Data/description  |
|---|---|
| Width                                   | 32 mm   |
| Nominal size                            | 2,2 mm  |
| Type of actuation                       | electrical  |
| Sealing principle                       | soft  |
| Assembly position                       | Any   |
| Manual override                         | with accessories, detenting                                       |
| Design structure                        | Poppet seat   |
| Type of reset                           | mechanical spring   |
| Type of piloting                        | direct  |
| Flow direction                          | non reversible  |
| Valve function                          | 3/2<br>monostable   |
| Operating pressure                      | -0,9 - 8 bar  |
| b value                                 | 0,1   |
| C value                                 | 0,46 l/sbar   |
| Standard nominal flow rate              | 96 l/min  |
| Switching time off                      | 15 ms   |
| Switching time on                       | 10 ms   |
| Duty cycle                              | 100%  |
| Characteristic coil data                | 230V AC: 50/60Hz, AL12W,HL8W                                      |
| Operating medium                        | Neutral gases<br>Dried compressed air, lubricated or unlubricated |
| CE Symbol                               | 73/23EEC (low voltage)  |
| Corrosion resistance classification CRC | 2   |



## MODH-3-2,2-230AC

### Solenoid valve

| Feature                            | Data/description                                 |
|------------------------------------|--|
| Medium temperature                 | -5 - 50 °C                                       |
| Protection class                   | IP65   |
| Ambient temperature                | -5 - 60 °C                                       |
| Product weight                     | 340 g  |
| Electrical connection              | Plug<br>to DIN 43650<br>Cubic design<br>Design A |
| Mounting type                      | On sub-base                                      |
| Pneumatic connection, port 1       | Flange   |
| Pneumatic connection, port 2       | Flange   |
| Pneumatic connection, port 3       | Flange   |
| Materials information for sub-base | POM  |
| Materials information for seals    | NBR  |
| Materials information, housing     | POM  |