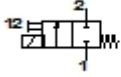


MDH-2-2,2-QS-6-110AC

Solenoid valve

| Feature | Data/description |
|---|---|
| Width | 42 mm |
| Nominal size | 2,2 mm |
| Type of actuation | electrical |
| Sealing principle | soft |
| Assembly position | Any |
| Manual override | with accessories, detenting |
| Design structure | Poppet seat |
| Type of reset | mechanical spring |
| Type of piloting | direct |
| Flow direction | non reversible |
| Valve function | 2/2 monostable |
| Operating pressure | -0,9 - 8 bar |
| b value | 0,14 |
| C value | 0,53 l/sbar |
| Standard nominal flow rate | 113 l/min |
| Switching time off | 9 ms |
| Switching time on | 11 ms |
| Duty cycle | 100% |
| Characteristic coil data | 110V AC: 50/60Hz, AL12W,HL8W |
| Operating medium | Neutral gases Dried compressed air, lubricated or unlubricated |
| CE Symbol | 73/23EEC (low voltage) |
| Corrosion resistance classification CRC | 2 |



MDH-2-2,2-QS-6-110AC

Solenoid valve

| Feature | Data/description |
|------------------------------------|--|
| Medium temperature | -5 - 50 °C |
| Protection class | IP65 |
| Ambient temperature | -5 - 60 °C |
| Product weight | 370 g |
| Electrical connection | Plug to DIN 43650 Cubic design Design A |
| Mounting type | with through hole |
| Pneumatic connection, port 1 | QS-6 |
| Pneumatic connection, port 2 | QS-6 |
| Materials information for sub-base | POM |
| Materials information for seals | NBR |
| Materials information, housing | POM |