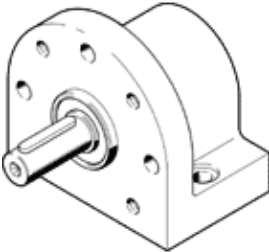


# freewheel unit

## FLSR-32-L

Part number: 15688  
Classic - do not use for new projects

For semi-rotary drives DSR.  
Modern alternatives can be found by entering the first four characters of the type code in the search field.



### Data sheet

Feature	Value
Size	32
Direction of rotation	anti-clockwise rotation
Assembly position	Any
PWIS conformity	VDMA24364-B2-L
Ambient temperature	-10 ... 60 °C
Theoretical torque at 0.6 MPa (6 bar, 87 psi)	9.98 Nm
Product weight	1,120 g
Material housing	Aluminium casting
Material sleeve	Case-hardened steel
Material shaft	Case-hardened steel