

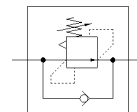
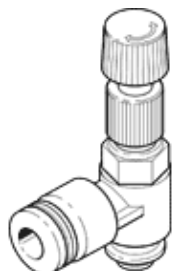
# differential pressure regulator

## LRL-1/4-QS-10

Part number: 153506

**FESTO**

Without manometer, with male thread and QS plug connector.



## Data sheet

Feature	Value
Controller function	Differential pressure, constant with return flow
Pneumatic connection, port 1	G1/4
Pneumatic connection, port 2	QS-10
Mounting type	Threaded
Nominal flow rate open	269 l/min
Pressure regulation range	2 ... 6 bar
Supply pressure 1 MPa	0 ... 0.9 MPa
Inlet pressure 1	0 ... 9 bar
Supply pressure 1 psi	0 ... 130.5 psi
Ambient temperature	0 ... 60 °C
Material housing	PBT-reinforced
Operating medium	Compressed air in accordance with ISO8573-1:2010 [7:-:-]
Actuator lock	Knurled screw with lock nut
Assembly position	Any
Design structure	directly-controlled piston regulator with looped-through compressed air supply
Nominal flow rate closed	262 l/min
Note on operating and pilot medium	Lubricated operation possible (subsequently required for further operation)
PWIS conformity	VDMA24364-B1/B2-L
Product weight	42 g
Material of threaded plug	Nickel-plated brass
Materials note	Conforms to RoHS
Material of threaded seal	PTFE