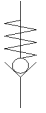
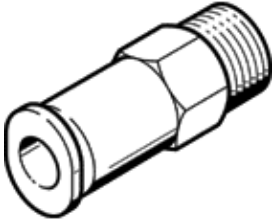


# non-return valve HA-1/2-QS-12

Part number: 153460

FESTO

Flow rate from the male thread to the QS plug connector.  
This type is suitable for vacuum.



## Data sheet

Feature	Value
Valve function	Non-return function
Pneumatic connection, port 1	R1/2
Pneumatic connection, port 2	QS-12
Mounting type	Threaded
Standard nominal flow rate	2,230 l/min
Operating pressure	-1 ... 10 bar
Ambient temperature	0 ... 60 °C
Material housing	Anodised aluminium
Housing colour	silver
Operating medium	Compressed air in accordance with ISO8573-1:2010 [7:-:-]
Min. differential pressure, opening	0.1 bar
Min. differential pressure, closing	0.2 bar
Note on operating and pilot medium	Lubricated operation possible (subsequently required for further operation)
PWIS conformity	VDMA24364-B1/B2-L
Product weight	69 g
Materials note	Conforms to RoHS