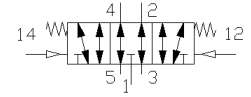
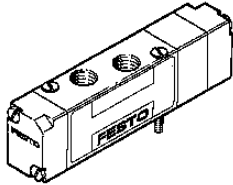


Pneumatic VL-5/3E-1/8-P

Part number: 152781

FESTO



Datasheet

Feature	Value
A1 Switching function symbol	S5C
A2 Switching function short code	5/3
A2A Functioning in mid-position (neutral)	entlüftet
A2B Direction of flow reversible	ja
A3 Operational principle	Schieber
A3A Form operating component	Kolben
A5 Non-overlapping	ja
A6 Type of control	direkt
A7 Type of setting	monostabil
A8 Type of reset	mechanische Feder
B5 Type of mounting	Schraubbefestigung
B6 Number mounting options	-
C Nominal size	4 mm
D1 Operating pressure min.	-0,9 bar
D2 Operating pressure max.	8 bar
D3 Minimum ambient temperature	-5 Cel
D4 Maximum ambient temperature	50 Cel
D5 Minimum temperature of medium	-5 Cel
D6 Maximum temperature of medium	50 Cel
D7 Start-/switch pilot pressure at D1	3 bar
E1A Connection type power ports	Platte+Gewinde
E1B Working port ducted exhaust	ja
E1C Connection type control ports	Gewinde
E22 Thread type (working port)	G
E26 Thread diameter (inch)	1/8 Zoll
E42 Thread type (control ports)	M
E43 Thread diameter (metr.)	5 mm
F3 Standard plate connection diagram	MD18
G1 Actuation/Reset	P05:P05
G2 Manual override	nein
J3 LABS criterion	frei
K1A Normal nominal flow 1 - 2	300 l/min
L2 Switching time ON/UM(dom) acc.to FN	5 ms

Feature	Value
L3 Switching time OFF/UM according to FN	5 ms
R2 Medium of operation	L33:L53:V2:V3
R3 Medium of control	L33:L53