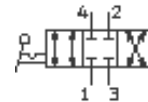
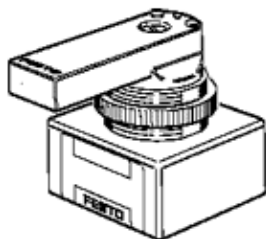


# Hand lever valve HS-4/3-1/8-B

Part number: 151842

FESTO

4/3-way valve with hand lever, closed in mid position.  
Discontinued, available through 2006  
This type is suitable for vacuum. Vacuum connection at port 3 (R).



## Data sheet

Feature	Value
Standard nominal flow rate	700 l/min
Pneumatic connection, port 2	G1/8
Pneumatic connection, port 4	G1/8
Operating pressure	-0.95 ... 10 bar
Design structure	Rotary slide valve
Nominal size	6 mm
Medium temperature	-20 ... 60 °C
Ambient temperature	-20 ... 60 °C
Actuation torque	1 Nm
Product weight	120 g
Mounting type	with through hole
Pneumatic connection, port 1	G1/8
Pneumatic connection, port 3	G1/8
Materials information for seals	NBR
Materials information, housing	Plastic