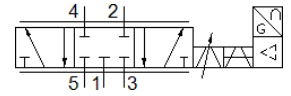
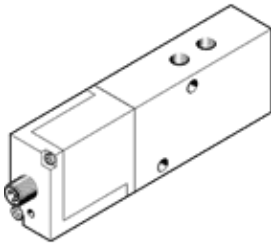


proportional directional control valve

MPYE-5-1/8-HF-010-B

Part number: 151693

FESTO



Data sheet

| Feature | Value |
|----------------------------------------------|----------------------------------------------------------------------------------------------------------|
| Nominal size | 6 mm |
| Type of actuation | electrical |
| Sealing principle | Hard |
| Assembly position | Any |
| Design structure | Piston slide |
| Type of reset | Magnetic spring |
| Safety instructions | MPYE safety position: If the power supply cable is interrupted, travel occurs to the closed mid-position |
| Type of piloting | direct |
| Flow direction | non reversible |
| Valve function | 5/3 closed |
| Polarity protected | for all electrical connections |
| Operating pressure MPa | 0 ... 1 MPa |
| Operating pressure | 0 ... 10 bar |
| b value | 0.26 |
| C value | 3.1 l/sbar |
| Standard nominal flow rate | 700 l/min |
| Limit frequency | 95 Hz |
| Max. hysteresis | 0.4 % |
| Operating voltage range DC | 17 ... 30 V |
| Residual ripple | 5 % |
| SETPOINT/ACTUAL values | Voltage type 0 - 10 V |
| Authorisation | RCM Mark |
| KC mark | KC-EMV |
| CE mark (see declaration of conformity) | to EU directive for EMC in accordance with EU RoHS directive |
| UKCA marking (see declaration of conformity) | To UK instructions for EMC To UK RoHS instructions |
| Operating medium | Compressed air in accordance with ISO8573-1:2010 [6:4:4] |
| Note on operating and pilot medium | Lubricated operation not possible |
| Corrosion resistance classification CRC | 2 - Moderate corrosion stress |
| PWIS conformity | VDMA24364-B2-L |
| Medium temperature | 5 ... 40 °C |
| Protection class | IP65 |
| Ambient temperature | 0 ... 50 °C |
| Product weight | 285 g |
| Electrical connection | 4-pin M12x1 Plug Round design |
| Mounting type | with through hole |
| Pneumatic connection, port 1 | G1/8 |
| Pneumatic connection, port 2 | G1/8 |
| Pneumatic connection, port 3 | G1/8 |
| Pneumatic connection, port 4 | G1/8 |
| Pneumatic connection, port 5 | G1/8 |

| Feature | Value |
|------------------|-----------------------|
| Materials note | Conforms to RoHS |
| Material cover | ABS coated |
| Material seals | NBR |
| Material housing | Aluminium Anodised |