

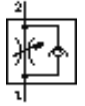
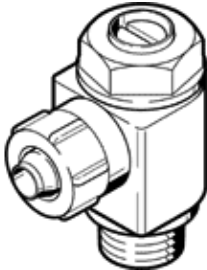
One-way flow control valve GRLZ-10-UNF-3/16-B

Part number: 151577

FESTO

For supply air flow control, with swivel joint.

This product is only available if ordered from the Festo Corporation, USA.



Data sheet

Feature	Value
Valve function	one-way flow control function for supply air
Pneumatic connection, port 2	UNF10-32
Adjusting element	Slotted head screw
Mounting type	Threaded
Operating pressure	0.2 ... 10 bar
Ambient temperature	-10 ... 60 °C
Operating medium	Filtered, unlubricated compressed air, 40 µm filtration Filtered, lubricated compressed air, 40 µm filtration
Medium temperature	-10 ... 60 °C